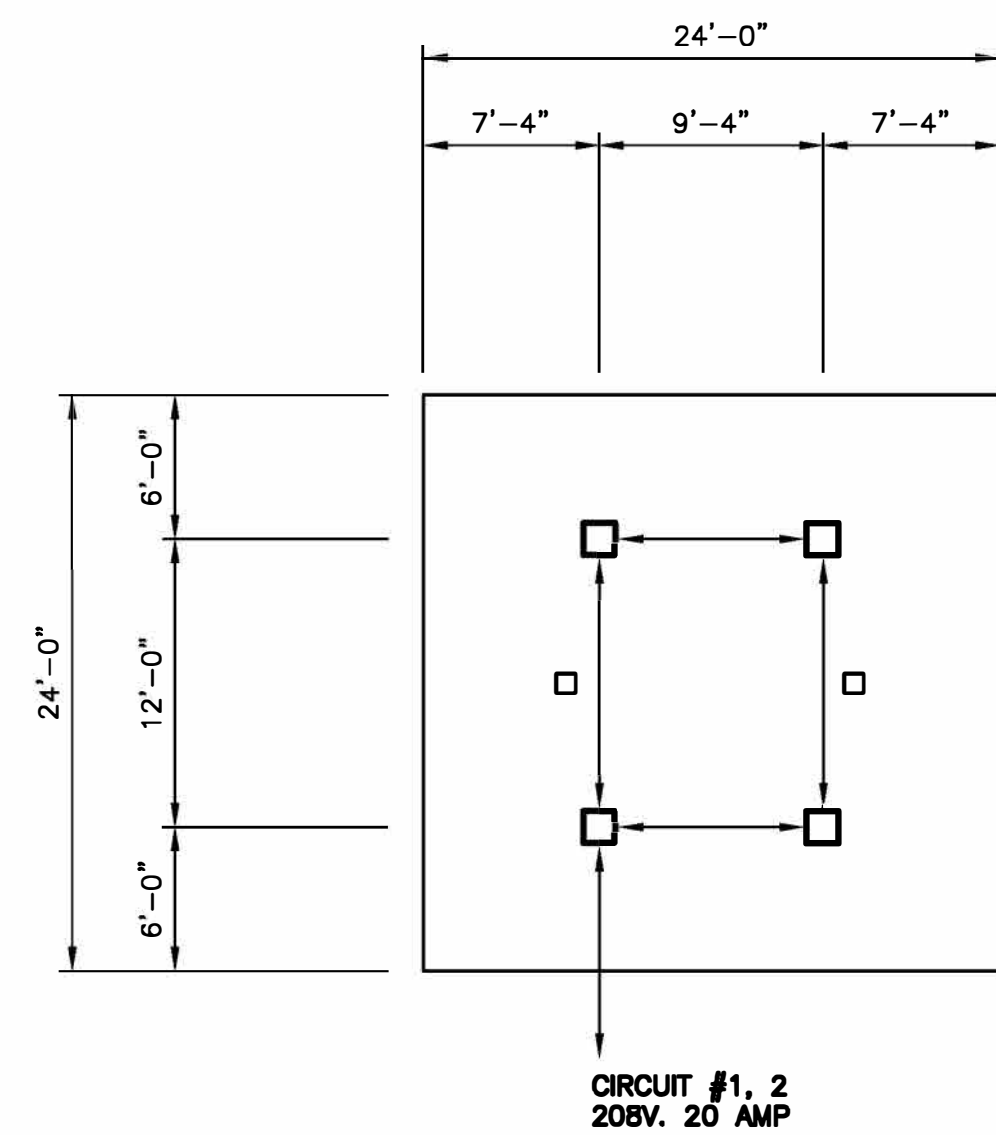


**LIGHTING LAYOUT PLAN**

SCALE: 1/8" = 1'-0"

LIGHTING NOTES:

- 1.) LIGHTS ARE TO BE DOWN ALLUMINARES.
- 2.) LIGHTING CONDUIT IS TO GO DOWN CANOPY COLUMN AND BACK TO THE BUILDING.
- 3.) CANOPY LIGHTING TO HAVE (2)-208 CIRCUITS AND CANOPY SIGNS ARE TO HAVE (1)-120 CIRCUIT AT BOX CONTROLLED BY BREAKERS.
- 4.) (2)-3/4" CONDUITS IN CANOPY COLUMN.



**LIGHTING POWER PLAN**

SCALE: 1/8" = 1'-0"

NOTE: IF THERE ARE SIGNS, VOLTAGE WILL BE 120V, 20 AMP CIRCUIT TO EACH

24'x24' CANOPY

MANUFACTURER:			CUSTOMER:		
NO.	DATE:	BY:	SCALE: NOTED		
1			DATE:	APPROVED BY:	DRAWN:
2			LOCATION:		REVISED:
3			DRAWING NO:		